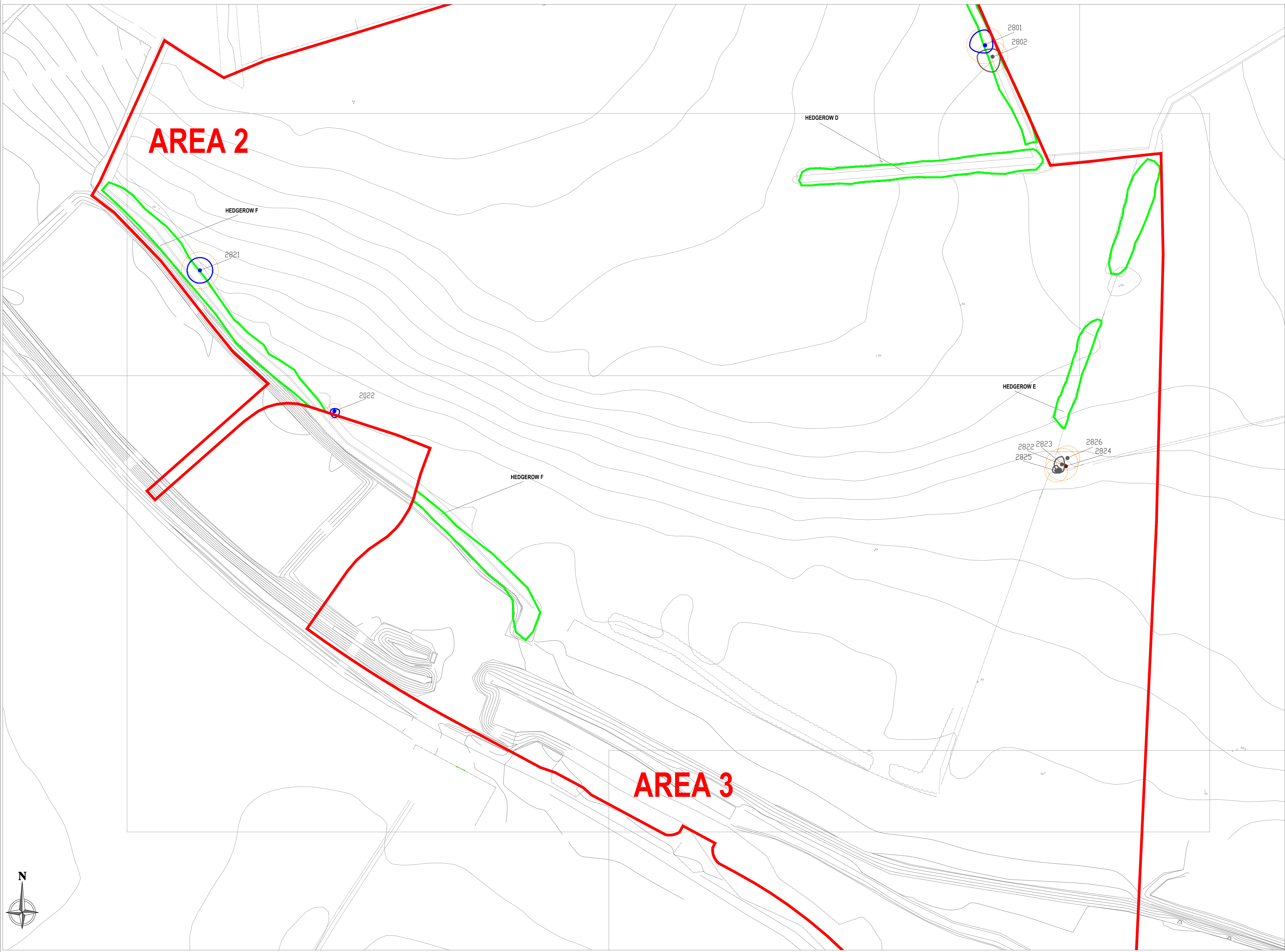


**AREA 2**

**AREA 3**



**LEGEND**

**TREE CONDITION CATEGORIES**

- A TREES OF HIGH VALUE AND QUALITY
- B TREES OF MODERATE VALUE AND QUALITY
- C TREES OF LOW QUALITY AND VALUE
- D TREES OF VERY LOW VALUE AND QUALITY TO BE REMOVED IN THE INTERESTS OF SOUND AGRICULTURAL MANAGEMENT

TREE CONSTRAINTS

- HEDGEROWS
- PLANNING BOUNDARY

Trees shown on arboricultural survey drawing are located approximately only. Exact locations may need to be ascertained if the trees are to be retained.

Drawing to be interpreted with reference to Tree Survey document.

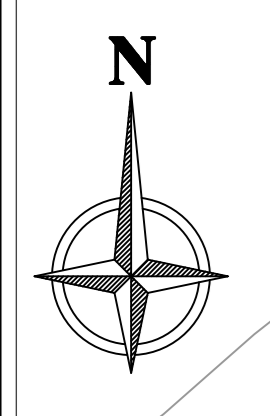
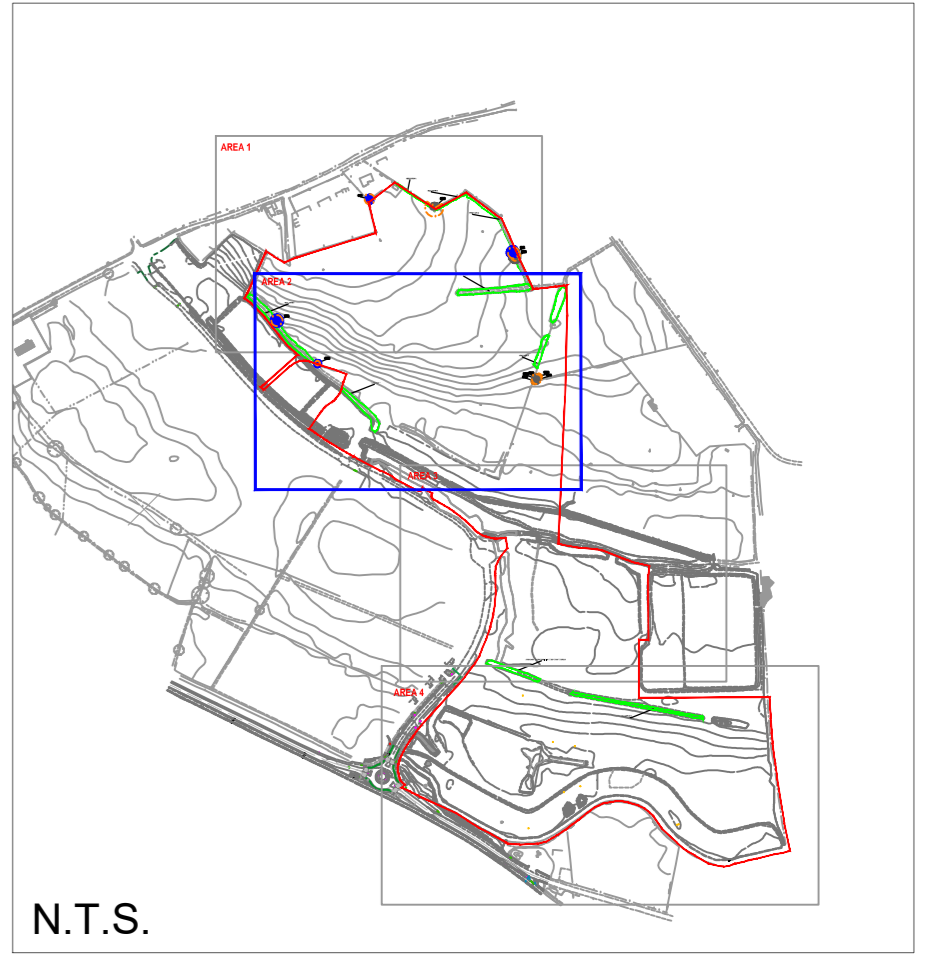
Hedgerow colour does not denote category. Refer to Tree Survey documents for details on individual hedgerow composition and condition.

Tree constraints shown are calculated from guidelines contained within BS5837 (2012) within dimensions contained within Section 8 of the Tree Survey document. This advice should not be interpreted as the exact extent of root spread however it is considered the optimal area to be retained free of developmental impacts.

Natural and/or man-made barriers such as waterlogged soil or buildings may restrict the spread of tree roots.

Crown spreads may also prove to be a constraint particularly where crown reduction may not be possible.

The constraints lines shown on this drawing are therefore a guide only. An on-site assessment should be undertaken in the event of any developments being planned within the areas shown for retained trees.



REV	DATE	DESCRIPTION
B	18/11/19	Scale change

<b>CMK</b>					
CLIENT	PROJECT	DATE	SCALE	JOB NO.	
McGarrett Realty Homes	RESIDENTIAL DEVELOPMENT, NEWTOWNMOYAGHY, KILCOCK, CO. KILDARE	13-12-19	1:500 @ A2	TKL004	
DRAWING	TREE SURVEY & CONSTRAINTS (2 of 4)	DATE	SCALE	DRAWING NO.	
DRAWN BY: CDR/ELVIS	CK	13-12-19	1:500 @ A2	100	
STATUS: PLANNING	REVISION	1	2	3	